



CD31 mouse mAb

Catalog No	YP-Ab-16846
Isotype	IgG
Reactivity	Human
Applications	WB;IP
Gene Name	pecam1
Protein Name	
Immunogen	Purified recombinant human CD31 protein fragments expressed in E.coli.
Specificity	This antibody detects endogenous levels of CD31 and does not cross-react with related proteins.
Formulation	Liquid in PBS containing 50% glycerol, 0.5% BSA and 0.02% sodium azide.
Source	Monoclonal, Mouse
Purification	The antibody was affinity-purified from mouse ascites by affinity-chromatography using epitope-specific immunogen.
Dilution	wb dilution 1:1000
Concentration	1 mg/ml
Purity	≥90%
Storage Stability	-20°C/1 year
Synonyms	Adhesion molecule;CD31;CD31 antigen;CD31 EndoCAM;Endocam;FLJ34100;FLJ58394;GPIIA; GPIIA';PECA1;PECA1_HUMAN;Pecam 1;PECAM 1 CD31 EndoCAM;PECAM;PECAM-1;Pecam1;Platelet endothelial cell adhesion molecule;Platelet/endothelial cell adhesion molecule 1; Platelet/endothelial cell adhesion molecule.
Observed Band	130kD
Cell Pathway	Cell membrane ; Single-pass type I membrane protein . Cell surface expression on neutrophils is down-regulated upon fMLP or CXCL8/IL8-mediated stimulation. .; [Isoform Long]: Cell membrane ; Single-pass type I membrane protein . Membrane raft . Cell junction . Localizes to the lateral border recycling compartment (LBRC) and recycles from the LBRC to the junction in resting endothelial cells. .; [Isoform Delta15]: Cell junction . Localizes to the lateral border recycling compartment (LBRC) and recycles from the LBRC to the junction in resting endothelial cells.
Tissue Specificity	Expressed on platelets and leukocytes and is primarily concentrated at the borders between endothelial cells (PubMed:18388311, PubMed:21464369). Expressed in human umbilical vein endothelial cells (HUVECs) (at protein level) (PubMed:19342684, PubMed:17580308). Expressed on neutrophils (at protein level) (PubMed:17580308). Isoform Long predominates in all tissues examined



(PubMed:12433657). Isoform Delta12 is detected only in trachea
(PubMed:12433657). Isoform Delta14-15 is only detected in lung
(PubMed:12433657). Isoform Delta14 is detected in all tissues examined with the strongest expression in heart (PubMed:12433657). Isoform Delta15 is expressed in brain, testis, ovary, cell surface of platelets, human umbilical vein endothelial cells (HUVECs), Jurkat T-cell leukemia, human erythroleuk

Function

function: This protein is a cell adhesion molecule expressed on platelets and at endothelial cell intercellular junctions. online information: CD31 entry, online information: PECAM-1, online information: The Singapore human mutation and polymorphism database, PTM: Phosphorylated on Ser and Tyr residues after cellular activation. similarity: Contains 6 Ig-like C2-type (immunoglobulin-like) domains. tissue specificity: Long isoform predominates all tissues examined, isoform Delta12 was detected only in trachea and isoform Delta14-15 only in lung, isoform Delta14 was detected in all tissues examined with the strongest expression in heart.

Background

The protein encoded by this gene is found on the surface of platelets, monocytes, neutrophils, and some types of T-cells, and makes up a large portion of endothelial cell intercellular junctions. The encoded protein is a member of the immunoglobulin superfamily and is likely involved in leukocyte migration, angiogenesis, and integrin activation. [provided by RefSeq, May 2010],

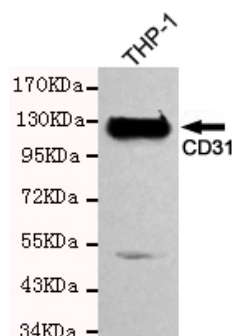
matters needing attention

Avoid repeated freezing and thawing!

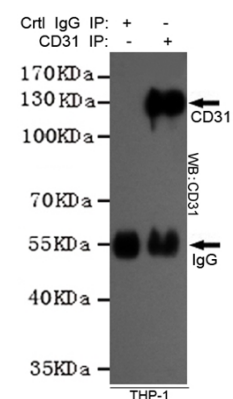
Usage suggestions

This product can be used in immunological reaction related experiments. For more information, please consult technical personnel.

Products Images



Western blot detection of CD31 in THP-1 cell lysate using CD31 mouse mAb (1:1000 diluted). Predicted band size: 130 kDa. Observed band size: 130 kDa.



Immunoprecipitation analysis of THP-1 cell lysates using CD31 mouse mAb.